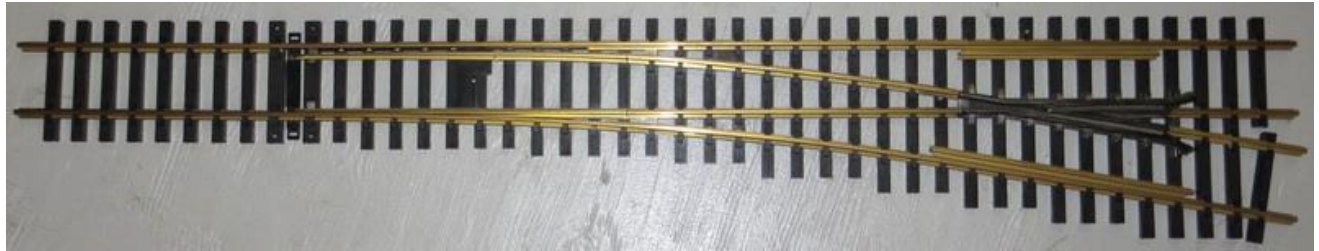
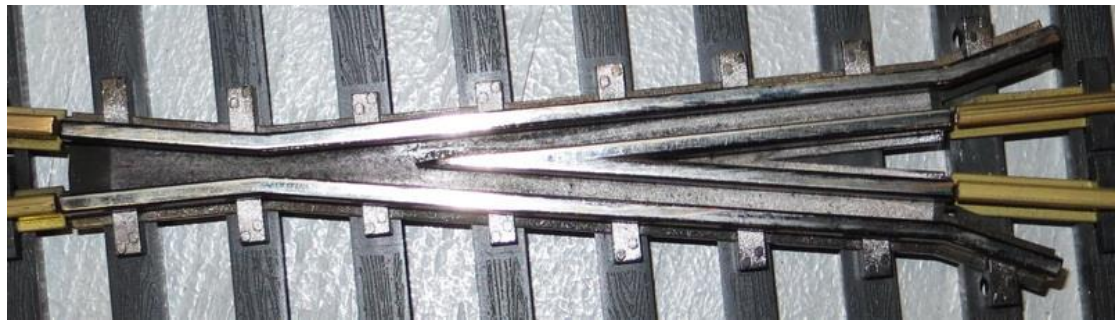


Aristo-Craft No. 6 Switch with Problematic "Frog" & Corrective Insert

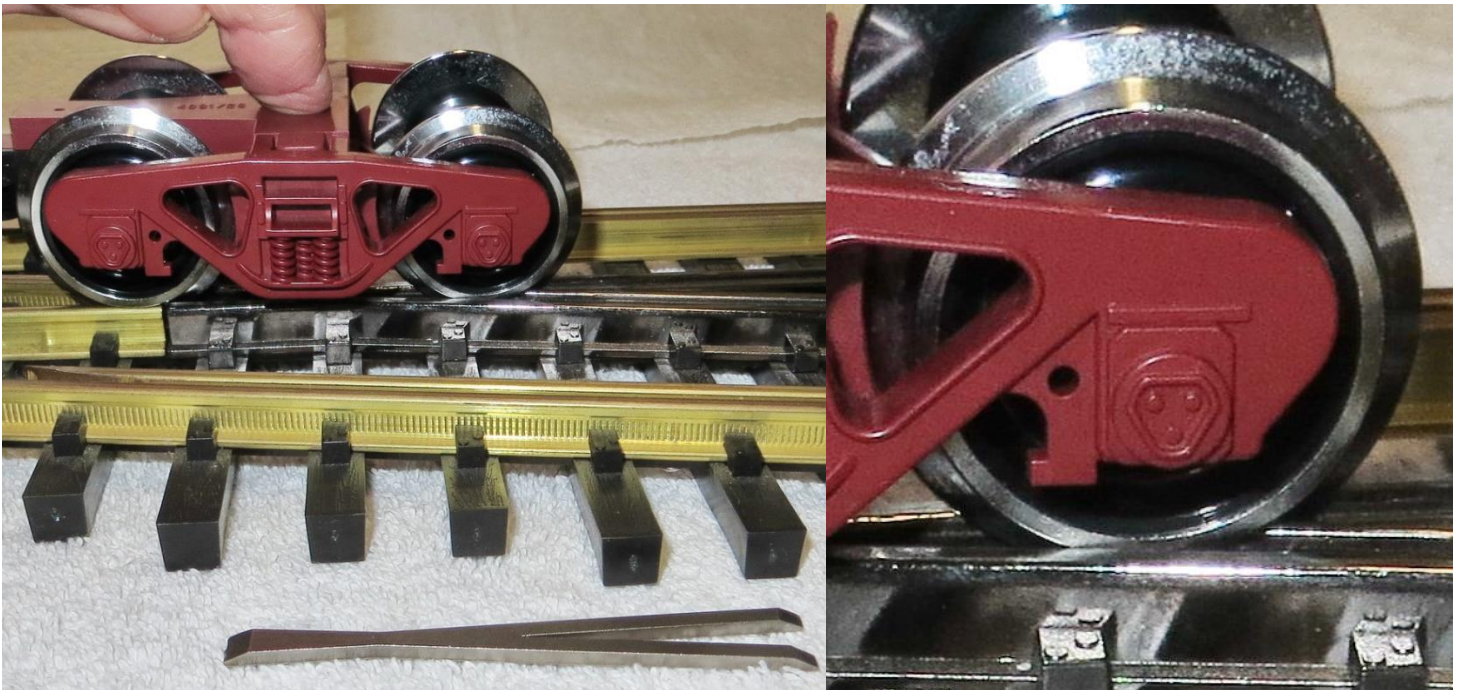
Aristo-Craft
"G" Scale
No. 6 Switch
(aka Turnout)



"Frog",
expanded view,
with factory
deep throat

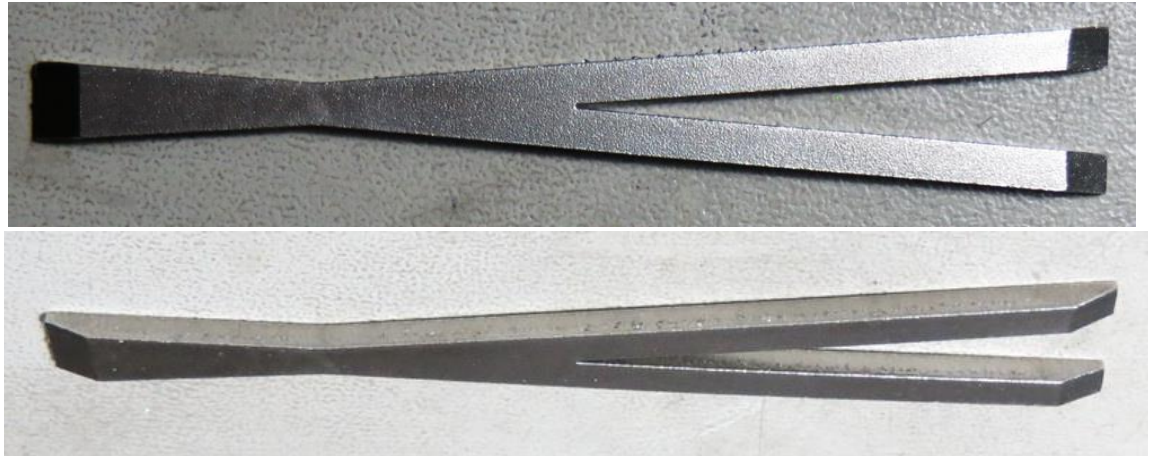


In addition to obnoxious audible affects, the frog point & wing rails, when repeatedly struck by wheels, can develop damaging wear as wheels drop into & then come out of the frog throat.

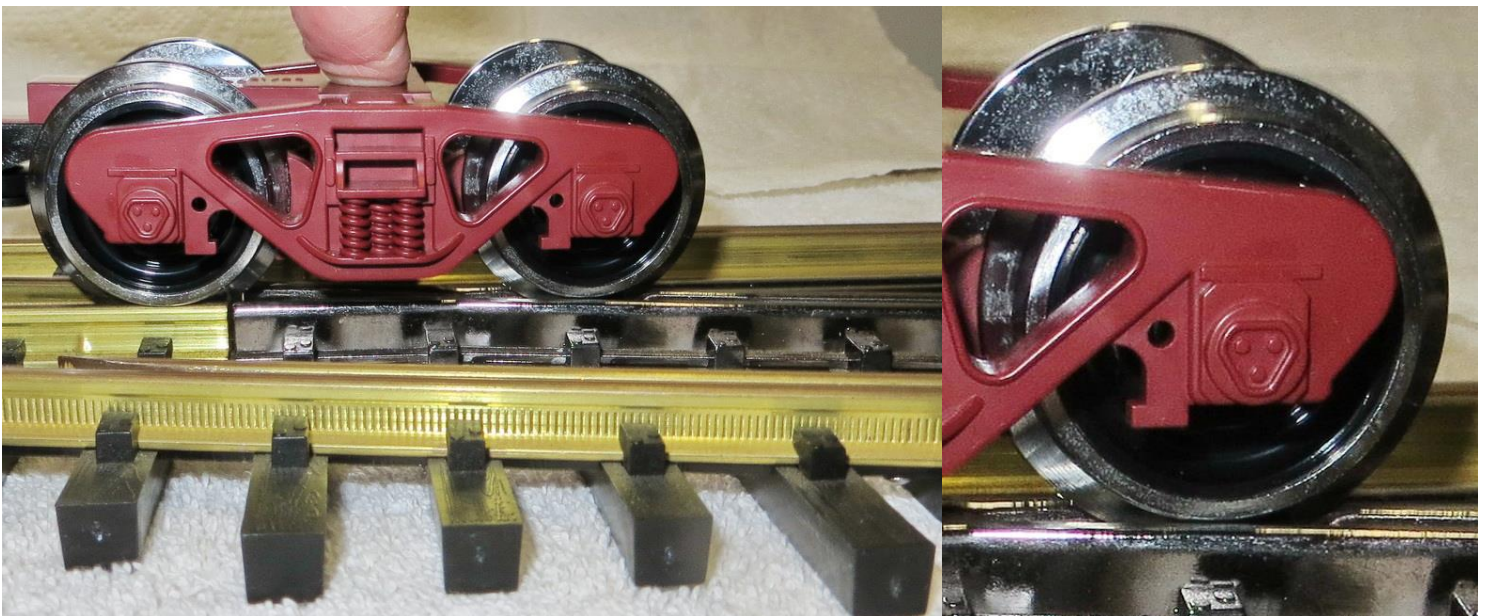
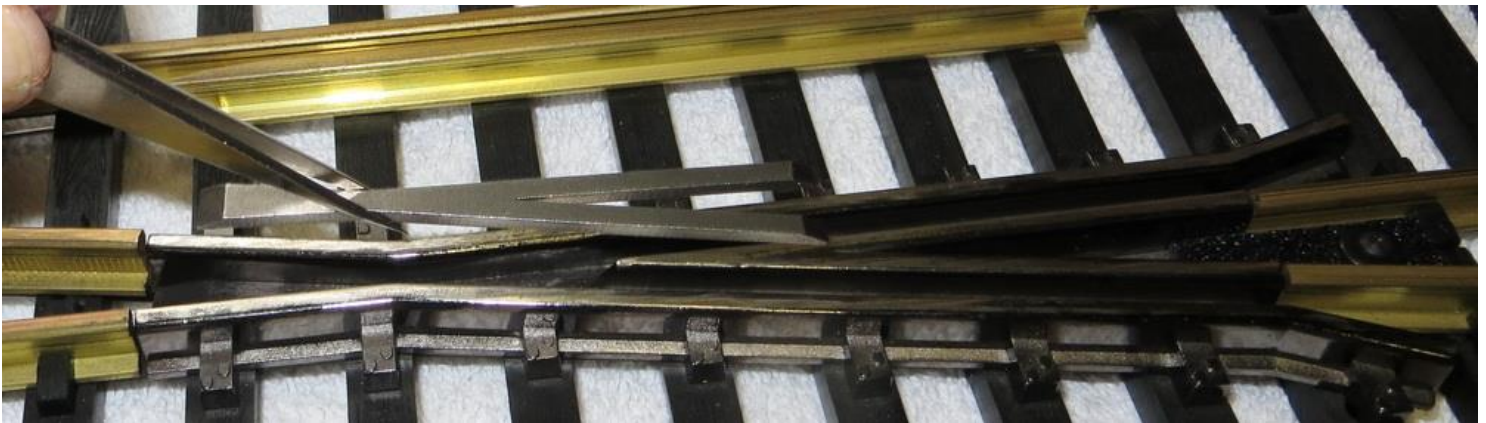


Example LGB truck with deep flange wheel drops into frog throat

Datum Precision
"Frog Legs"
Stainless Steel
Corrective Insert
(Prevents wheel
from totally
dropping into
Frog throat)



The insert fits both left and right Aristo-Craft No. 6 turnouts and is held in place by gravity.
Drop in the *Frog Legs Insert* into the throat of the frog with end "ramps" facing up.



Example LGB same truck wheel flange rides on insert - wheel does not drop into frog throat